

---

## Contents

---

<b>Title</b>	<b>Author</b>	<b>Page</b>
<b>Articles</b>		
<b>British Horse Society</b>		7
<b>Cambridgeshire Libraries</b>		5
<b>Shopping for Isolating Villagers</b>	Alex di Giorgio-Miller	6
<b>Swaffham Prior Community Land Trust</b>		11
<b>Tennis Court</b>		3
<b>Advertiser's List</b>		18
<b>Anglesey Abbey</b>	Chloe McMath	15
<b>Burwell and Reach Car Scheme</b>		12
<b>Burwell Museum and Windmill</b>		21
<b>Burwell Museum Coach Trips</b>		15
<b>Bus Timetable</b>		35
<b>Cambridgeshire Fire and Rescue</b>		17
<b>Church</b>		
<b>Church Services and Events</b>		34
<b>Letter from the Vicarage</b>	Eleanor Williams	23
<b>Contact Information</b>		36
<b>Diary Dates</b>		34
<b>Dyke's End</b>	Mel Longfoot	22
<b>Events Team</b>	Debbie Quilter	8
<b>Food Focus</b>	Catherine Gibson	21
<b>IT Advice</b>	David McMillan	16
<b>Neighbourhood Plan</b>	Nick Acklam	5
<b>Neighbourhood Watch</b>	Kevin Evans	12
<b>Out and About</b>	Joss Goodchild	12
<b>Parish Council</b>		
<b>Grant Fund</b>		21
<b>Know your District Councillors</b>		24
<b>Know Your Parish Council</b>		24
<b>Parish Councillor Vacancy</b>		4
<b>Meeting Minutes</b>		27
<b>Village Update</b>	Alex de Giorgio-Miller	3
<b>Pet's Corner</b>		15
<b>Rosanna's Ramblings</b>	Rosanna Moseley Gore	10
<b>Snakehall Farm</b>	Liz Pitt	
<b>Sport and Recreation</b>		
<b>Cricket Report</b>	Ross Clark	25
<b>Reach Riders</b>		8
<b>Tales from a Reach Garden</b>	Danuta Gibson	20
<b>Then and Now</b>	Chris Patterson	36
<b>Wicken Fen</b>	Julia Hammond	17

---

## From the Editor

---

Its now been over four months since we went into lockdown and it is pleasing to see a recent decrease in restrictions on what we can and cannot do. We are especially delighted to have our pub back open – you can see their new opening hours on page 22.



We can also welcome the new owners of the Red Lion, Deano and Emma. They are advertising in the magazine, on the first page of the adverts section and as you will see, they are open every and serving food every day of the week.

I am also delighted to say that one of our regular articles is to return. Claire Halpin-McDonald used to interview villagers to learn a little more about them. It's not just aimed at newcomers, there are many villagers who have done interesting and exceptional things in their lives. Joss Goodchild is going to take this on so be prepared for the phone call!

And if anyone else can identify a subject for a regular article then please let me know. Anybody up for doing restaurant reviews or similar?

The only other thing of note is that for the first time ever, we have seven, yes seven, pages devoted to the Parish Council Minutes for June and July! Enthralling stuff indeed – so yet another reason for you to volunteer to fill the current Parish Councillor Vacancy that exists (see page 4)

Stay well everyone.

**David Parr**

davidmparr@btinternet.com or 07887 563720

Cover Picture courtesy of Rosanna Moseley-Gore



---

## About the Magazine

---

The purpose of *Within Reach* is to serve the whole village by circulating information and interesting articles free to every household. Additional copies are available at a charge of £2.50. Issues are published bi-monthly covering the months of Feb/Mar, Apr/May, June/July, Aug/Sept, Oct/Nov and Dec/Jan.

Copies of *Within Reach* magazine and its predecessor *Out of Reach* can be found on the village website [www.reach-village.co.uk](http://www.reach-village.co.uk). The next copy date is 15<sup>th</sup> July 2020. This magazine (which is fully funded from advertising) is approved and printed by Reach Parish Council.

---

## The Team

---

<b>Editor</b>	David Parr
<b>Distribution</b>	Freda Lloyd, Claire Halpin-McDonald and Grahame Radford
<b>Photographer</b>	Rosanna Moseley Gore
<b>24Acres</b>	David Thomas
<b>Church</b>	Eleanor Williams
<b>Cookery</b>	Catherine Gibson
<b>Cricket</b>	Ross Clark
<b>Events Team</b>	Debbie Quilter
<b>Gardening</b>	Danuta Gibson
<b>IT Advice</b>	David McMillan
<b>Metal Detecting</b>	Luke Mercer
<b>Neighbourhood Watch</b>	Kevin Evans
<b>Parish Council</b>	Alex de Giorgio-Miller
<b>Reach Riders Group</b>	Sue Cameron
<b>Rosanna's Ramblings</b>	Rosanna Moseley Gore
<b>Snakehall Farm</b>	Liz Pitt
<b>Then and Now</b>	Chris Patterson
<b>Wicken Fen</b>	Julia Hammond
<b>Wildlife</b>	Joss Goodchild

---

## Village Update

---

After being closed 'forever' (my children's words!), the playground and swings were finally reopened on 4<sup>th</sup> July – hurrah! Please do enjoy, it is lovely to see the kids out having fun on the equipment again!



Do be aware that the equipment is not being cleaned by the Parish Council – we don't have the resources to do this regularly enough to make a difference to the risk. Users are encouraged to take precautions to protect their families – washing hands before and after use, wiping down surfaces that are touched and using hand sanitizer. We also ask that people please do not eat or drink in the playground area and dispose of any rubbish sensibly. Please maintain 2 metre social distancing when using the equipment and if the playground is busy, consider returning at a different time so that social distancing is possible.

Sadly, there have been several incidents of vandalism recently, including some significant damage to the Hythe, possibly caused by overnight campers on the 4th/5th July. This has been reported to the police and the area has now been cleaned up with the help of several residents - a huge thank you to those of you who tidied up the damage and rubbish left at the Hythe. If you have any information about the incident on the Hythe, then please do contact the police (crime reference number 35/45692/20). If you see any further incidences of vandalism then please do let the Parish Council know by emailing the clerk ([clerk@reachparishcouncil.org](mailto:clerk@reachparishcouncil.org))

With things opening up a little more, there are less people requiring the services of the Reach Help Network – the volunteer group set up to support those shielding during the worst of the pandemic. We are still here if you need us (call 07771348013 or email [a.degiorgiomiller@gmail.com](mailto:a.degiorgiomiller@gmail.com)), so please do get in touch if you need anything. It has been a fabulous show of community spirit, with over 100 Co-op orders delivered and countless other post office/pharmacy/bakery trips too. Thank you to everyone who volunteered – and a special huge thank you to Claire Acklam and Cristine Fletcher for the many hours they have put in, it literally wouldn't have worked without you!

I hope you have a fantastic summer, stay safe!

To see the full list of current councillors and their contact details please visit the website at: [http://www.reach-village.co.uk/parish\\_council.html](http://www.reach-village.co.uk/parish_council.html) and note that we have a vacancy, so if you would like to be considered for co-option please get in touch with Susan Bailey ([clerk@reachparishcouncil.org](mailto:clerk@reachparishcouncil.org)).

### Alex de Giorgio-Miller

Chair – Reach Parish Council  
[a.degiorgiomiller@reachparishcouncil.org](mailto:a.degiorgiomiller@reachparishcouncil.org)

---

## Tennis Court

---



The construction of our tennis court commenced on the 25<sup>th</sup> October 2010 so this year will be its 10 year anniversary. The informal opening took place on Sunday 5<sup>th</sup> December and you can see the pictures taken on the day by clicking on the link.



Its been used well over the period, an excellent court in a delightful setting. It's showing its age a bit now and some work needs to be done:

Firstly, a new box is in place so you can make bookings for matches, just as you used to. The net mechanism needs attention – nothing too significant – we just need to be able to lower the net after each match. Line repainting is needed too but maybe court repainting can be delayed for another few years. We have around £2,200 as reserves, a fair proportion of this coming from non-Reach residents who pay £20 a year to be Sponsored Visitors (so don't be too concerned if you see non-Reach residents using it).

To see how to access the court, visit the village website.

Enjoy your tennis – its great exercise!

David Parr

---

## Parish Council of Reach Vacancy for a Parish Councillor

---

### MAKE A CHANGE, BECOME A LOCAL COUNCILLOR

Reach Parish Council is calling on residents, passionate about their community to become a Councillor.

#### What do councillors do?

Councillors are the champions of their community and give residents a voice on the decisions the council makes. Becoming a councillor will allow you to make a real difference in your community by engaging with residents, local groups and businesses to find out their needs; making decisions on which services and projects the council should take forward; and getting involved locally to ensure the services are meeting your community's needs.

#### How much time does it take?

The National Association of Local Councils (NALC) Local Councillor Census Survey found that councillors put aside, on average, three hours a week for council work. This often includes attending meetings, engaging with residents and speaking on behalf of the council to other bodies.

#### Can I stand?

There are only a few rules. You must be:

- A British citizen, or a citizen of the Commonwealth, or the European Union
- 18 years of age or older
- Live in the area that is served by the Parish council

#### How can I get involved?

Contact Susan Bailey

clerk@reachparishcouncil.org to find out more

---

## LOCAL GOVERNMENT ACT 1972

---

### PARISH COUNCIL OF REACH

### NOTICE OF VACANCY IN OFFICE OF PARISH COUNCILLOR

NOTICE IS HEREBY GIVEN that a vacancy exists on REACH PARISH COUNCIL.

REACH PARISH COUNCIL is made up of 7 councillors and details can be found at:

[http://www.reach-village.co.uk/parish\\_council.html](http://www.reach-village.co.uk/parish_council.html).

The council meets once a month on the first Wednesday, on Zoom at the moment, or in the Village Centre once allowed – the workload is not onerous.

If you would like to discuss or be considered for this position, then please email or call:

Susan Bailey  
Clerk to Reach Parish Council  
29 Great Lane  
Reach CB25 0JF

**Email:** [clerk@reachparishcouncil.org](mailto:clerk@reachparishcouncil.org)  
01638 743794

27<sup>th</sup> July 2020

---

## Neighbourhood Plan

---

As with almost everything else, progress on the Neighbourhood Plan has been slowed by the coronavirus pandemic. Crucially it has prevented the NP Group from consulting villagers face to face. Nonetheless we are making progress.



There are detailed reports of the Group's activity in issues 60 and 61 of 'Within Reach' which, whilst not printed because of the pandemic, can be viewed online at <http://www.reach-village.co.uk/magazine.html>. The Group is meeting online and villagers are welcome to join us. A link to the meeting is contained in the agenda which is circulated a few days in advance.

We are now close to completing the evidence stage of the neighbourhood planning process. The material can be viewed on our webpage [http://www.reach-village.co.uk/neighbourhood\\_plan.html](http://www.reach-village.co.uk/neighbourhood_plan.html). We aim to present a draft Plan to the village for comment, amendment and addition later in the year. Hopefully this will be at an open day in the Village Hall. Beyond that, we aim to have completed formal consultation and examination processes and to be able to put the Plan to you for endorsement (or otherwise) in a referendum in the late summer of 2021.

### Nick Acklam

Chair Reach Neighbourhood Plan Project Group  
[n.acklam@reachparishcouncil.org](mailto:n.acklam@reachparishcouncil.org) 743749

## PAUL BRAYBROOKE

### Oil Fired Boiler Engineer

- Boiler Servicing
- Breakdown Repair
- Commissions
- Tank Replacements



**Paul Braybrooke – Oil Fired Boiler Engineer**  
1 Steward's Lane, Sutton, Ely CB6 2NG  
Tel: 01353 777788 or 07946 735691  
[www.paulbraybrooke-oilboilerservices.co.uk](http://www.paulbraybrooke-oilboilerservices.co.uk)

---

## Cambridgeshire Libraries

---



Cambridgeshire Libraries can now accept new referrals to the Revised Library@Home Service. This service is open to Cambridgeshire Residents who fit a set criteria:

**The service is for anyone who usually relies heavily on reading books or listening to audiobooks AND who is housebound, shielding or isolating due to age or health conditions under the current COVID-19 Government guidelines.**

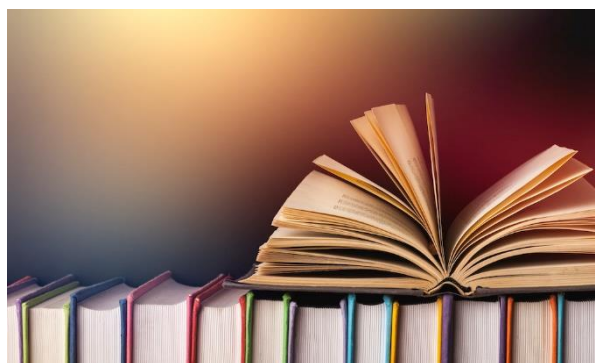
People accepted for this service will be contacted by a member of the Library@Home Team who will arrange a doorstep delivery of specially chosen books/audiobooks. Deliveries will be monthly (by prior arrangement) and previously loaned books/audiobooks will be picked up when new ones are delivered.

**To enquire about the Revised Library@Home Service you can contact us:**

By email - [volunteers@cambridgeshire.gov.uk](mailto:volunteers@cambridgeshire.gov.uk)

By phone – 07442 022 926 or 07342 700308

A member of Library@Home team will respond to the referral.



If you have any questions, please do not hesitate to contact me.

Kindest regards,

**Magda Kowalska-Cheffey**

Cambridgeshire Libraries  
Area Volunteer Coordinator  
Hunts and Fenland

---

## Shopping for Isolating Villagers

---

Working with the fabulous Co-op in Burwell, we have set up a system to serve our vulnerable in the village. For those over 70 or self-isolating due to underlying health conditions, we are able to take email orders which will be picked by the Co-op staff for us and collected and delivered by our volunteers. Deliveries will be made to the village on Wednesdays and Sundays to coincide with when the Co-op has most stock delivered.

### Placing an order

Orders please to be sent by email to [a.degiorgiomiller@gmail.com](mailto:a.degiorgiomiller@gmail.com) on a Monday for the Wednesday delivery and Friday for the Sunday delivery. For those unable to email, please call Pam King on 07484 852889 or David Parr on 07887 563720 and they will be able to take down your order and email it on. I will need your address and contact number. When writing your shopping list, please be mindful that your normal brands might not be available. If you prefer a particular brand then feel free to list it, but it will be substituted if not available. If brand isn't important then generic requests, eg. 1x White, sliced loaf, will work.

You will receive an email confirming your order and letting you know the name of the volunteer who will be delivering for you, and the number of the ID card I have issued them.

### Payment

In the morning on the delivery day, a volunteer will knock at your door and then step 2m back. They will show you a Reach Help Network identification card like this:



Please could we ask that you wash your debit card (and hands) in soapy water before putting it outside for the volunteer to pick up once you have closed the door. This debit card will be taken to the Co-op to pay for your shopping contactlessly. Please wash it again when it is returned as the volunteer will not have been able to. The current limit for contactless payments is £30, so your shopping will be split into £30 bundles. The government is due to increase the limit to £50 to help this.

### Delivery

Your shopping and card will be left on your doorstep later on your delivery day. Your receipt will be in the shopping bag. The volunteer will leave your shopping on your doorstep, knock on your door and will then stand back 2m to let you collect it. We need to see that you have taken your card back safely so please come when you hear the knock!

### Data protection

Only the volunteers will have your name, address and contact number details. The Co-op have asked for each delivery to be numbered so that they do not get any of that information.

### Alex di Giorgio-Miller

## BHS 2026 - Historical Researcher

Do you hack out? Do you know whether the routes you ride on are legally recorded?

The  
British  
Horse  
Society

“Find the missing pieces, fill in the gaps, complete the jigsaw!”

On 1st January 2026, historical routes in England that aren't properly recorded will be lost to the public forever. We are looking for people to volunteer their time to help us identify and register these routes before it's too late.

2026 research can be really flexible and done as and when you have time and energy. We are keen to hear from volunteers with a range of skills and abilities, which may include: solving puzzles, map reading or an interest in local history. Support, training and expenses provided for all 2026 volunteers.

If you would like to register to support the BHS 2026 project in your area, please contact our Volunteer Support Team at [volunteer@bhs.org.uk](mailto:volunteer@bhs.org.uk)

The British Horse Society is a Registered Charity Nos. 210504 and SC038516



---

## Reach Riders

---



As lockdown has been easing we have seen an increase in both our membership and use of the arena , which is lovely.

A socially distanced committee meeting was held outside in the arena on a lovely summers evening.

All fundraising and social events remain on hold, but we have been able to organise clinics with a local instructor Sarah Anderson. These are proving popular, which is fantastic.

The arena was also featured in the on-line edition of Horse and Hound Magazine - the article can be found via the link below:

<https://www.horseandhound.co.uk/news/riders-behind-community-arena-scheme-hope-to-inspire-others-716980>

We continue to be grateful to Craig Reader who is doing a great job of maintaining the land for us

**Sue Cameron**

---

## Events Team

---

The remaining events we have planned for this year are as follows:

### Car Boot Sale (CANCELLED)

Sunday 13th September

We were hoping to build on the success of last year's event, but we feel encouraging visitors to the village, at this time, is not appropriate. But as soon as we can properly organize this, we will.

### Reach Scarecrow Festival

Have a look at the poster on the **facing page** – it should be lots of fun so please give it a go. You'll need to let us know about your entry either by email or by filling in the form (below) and posting it through my letterbox.

### Village Advent Calendar

December 2020

An idea put forward where window displays are revealed across the advent period. Watch this space for more information and get in touch if you would like to take part. We will be needing a number of volunteers.

### Christmas 2020 Dates

Christmas lights switch-on	Sun 6th Dec
Seniors Christmas lunch	Wed 16th Dec
Christingle service	Sun 20 <sup>th</sup> Dec
Carols around the tree	Thurs 24 <sup>th</sup> Dec

We're always keen to hear ideas from villagers – the Senior's Lunch, which has become such a success, came from a suggestion from Ann Jennings for example.

Our **Village Tea Towels**, in three different colours, have been selling really well. We do have some left (we purchased enough to last through this year). Pricing is £4.00 each, £7.50 for 2 or £10.00 for 3. If you like to buy some, please let David Parr know on 07887 563720 or [davidmparr@btinternet.com](mailto:davidmparr@btinternet.com).

**Debbie Quilter**

### Reach Scarecrow Festival Entry Form

You are invited to create a scarecrow for our first ever Scarecrow Festival. A chance to show off your creative flare, please display your scarecrow so it can be easily seen from the road or footpath. There is no specific theme this year so let your imagination run wild!

- Entries need to be displayed from 5pm on Thursday 10th to Sunday 13th September.
- Judging will take place on Sunday 13th September
- All entries registered by 31st August, so we can produce trail maps
- Please complete the form below and pop in the postbox outside 33 Fair Green or send us your details via email [reacheventsteam@btinternet.com](mailto:reacheventsteam@btinternet.com)

Name \_\_\_\_\_  
Scarecrow's name \_\_\_\_\_  
Address and location of Scarecrow \_\_\_\_\_  
Contact number \_\_\_\_\_







## REACH SCARECROW FESTIVAL

Create your own scarecrow

Prizes for the best entries

**10TH-13TH SEPTEMBER**



Register your entry for free contact  
[reacheventsteam@btinternet.com](mailto:reacheventsteam@btinternet.com) or fill out the entry form in  
the magazine.

Entries should to be displayed from 5pm Thursday 10th to  
Sunday 13th September, when entries will be judged.  
Winners will be announced in the next issue of Within Reach

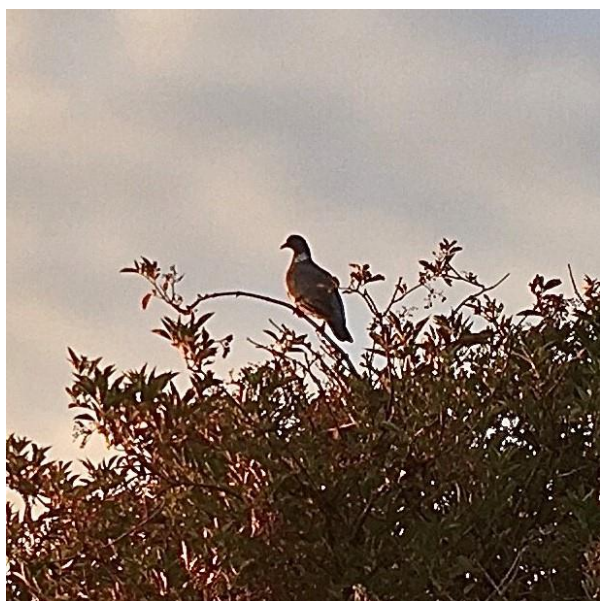
Made with PosterMyWall.com

---

## Rosanna's Ramblings

---

Despite all the extraordinary changes of these last few months, there has been one thing that remains – regrettably – constant. No, it's not that night follows day (although that's true), nor that there's either too much rain or not enough rain (true in Charles's highly stressed world view). It's not even that the highlight of our exciting lives is the twice-daily peregrination around our garden to see how all the vegetables are doing. No, dear reader, it's the WOOD PIGEONS.



Now I confess to hating these birds. I first remember hating them when I was about six years old and they were occasional clumsy, clattery visitors to our suburban London garden. I disliked their Oliver Hardy bulk and air of proud entitlement. I disliked the way they muscled in slowly to the food supply we left for Nice Birds. I disliked the amount, and - sorry – squelchiness of their ample droppings.

There was one occasion, when I was still working in Northampton, I recall being in the treatment room with an acupuncture patient and I happened to glance out of the window. And then did a double-take when I realised what I had just seen. On the top of a large roof far across a wide road, I could see the unmistakably stolid silhouettes of eight wood pigeons. No, nine. Ten. Eleven. It was horribly mesmerizing, like observing a mutated scene from Hitchcock's "The Birds". I couldn't help expressing my dismay to my patient. "What's a wood pigeon?" she asked. Well, how she had reached the age of 50 not knowing this rendered me incredulous, and nearly speechless.

Actually that last bit is clearly untrue, as I proceeded to regale her on said bird and my hatred thereof for quite some time! I'm proud to say that I converted her to my clearly correct view, so effectively that she started (meanly) to message me photos of them, accompanied by a suitably unhappy emoticon.

A few years ago, one of my friends told me (when I was having one of my regular rants about there being too many wood pigeons) that in her family tradition, the monotonous cooing of the wood pigeon was said to be saying "My **toe** hurts, Betty" – and ever since that moment, I have found myself muttering darkly "Well go and see a chiropodist, for pity's sake". Sometimes they can't even be bothered to say the "Betty" and just repeat over and over and over and over "My **toe** hurts, my **toe** hurts, my **toe** hurts ..." I don't think our editor would be too impressed if I just repeated that until the end of my allotted word count, but wood pigeons have no such embarrassment, or qualms, about driving one to distraction with combined boredom and rage!

So that brings me on to the present day – right now, in fact. As I type this I can hear three distinct foot complainings going on, just offset from each other in tone, pace and pitch to form a rather nauseating sound effect that, with suitable digital manipulation, could well serve as a form of subliminal torture. We walk around the village – fields, droves, lode, wood – a lot and it's fine as long as there is enough distraction from sight and other sounds (like jackdaws, tractors, sheep, cattle, distressed blackbirds, happy mellifluous blackbirds, children playing ... well, anything at all really). But the moment, the split second, that my attention picks up the cooing (and here I must stress I'm not talking about the rather charming swooping WOOOooo of the pretty and modest collared doves), then I'm lost. Caught in a vertiginous downward spiral into something akin to existential despair. Because then I can hear nothing else. Nothing else at all.

And if it were just the sound, I guess it would be possible to disguise it by permanently wearing massive headphones and blasting oneself with trance music. But it isn't just the sound. It is their omnipresence. This spring and summer, the population of wood pigeons around Reach has been growing explosively. Well, it would do, considering quite how persistent and in-your-face are their courtship displays, their testosterone-fuelled competitive male wing-duelling and (credit where it's due) their impressively agile and precarious mating on telegraph wires. Maybe it's not helped by the fact that our garden is ringed with tall trees, whence emanates the other noise wood pigeons rejoice in poisoning the peace of our lives with – endless wing flapping and clattering, and bashing about. Nothing like a sudden outburst of that to ruin a quiet moment of stillness between bouts of chasing them away from our seedlings.

I suspect that if we weren't quite as obsessed with growing produce for table and freezer, we perhaps might feel more charitable towards wood pigeons. Put a different filter on and they are rather beautifully-coloured large birds who just want to be left in peace to eat everything in sight and bring up large families so that their offspring can eat everything in sight. What's wrong with that?

Well, everything – if like us, you've had to cover all your tender growing vegetables with wire cages, thus ruining the joy of being able to look across a fine kitchen garden and admire its rows of beetroot (of different colours), lettuce (of different leaf shape and hue), beans and chard in unsullied beauty.

I know it's not healthy to press a bruise, but I have even spent time reading about them on the internet, only to discover that they can apparently breed throughout the year; and that they can store huge quantities of what they eat in their large crops (giving them that bloated throat), and then they somehow manage to fly up into a tree, fall asleep and digest. Why does that image disgust me so much? Charles describes them as 'compost heaps with wings' and says they make good eating – but honestly, I just don't think I could bring myself to eat something that revolts me.

Before you dismiss my words with pity for someone clearly suffering from a state of anxious paranoia, or with contempt for someone not loving all of God's creatures ... may I say one thing in my defence. Well two, actually. I would never deliberately harm anything. And I did listen, with a surprisingly open mind, to a story told us by a friend just the other day. She said she had witnessed a wood pigeon attacking a sparrowhawk in her garden, as the sparrowhawk had attempted to pull out of a caged bird feeder a greenfinch. Greenfinch saved, sparrowhawk seen off, woodpigeon wearing halo. "Probably just defending its brood" I muttered.

**Rosanna Moseley Gore**



---

## Swaffham Prior Community Land Trust – Homes to Rent

---



It's been five years since we last advertised our eight homes to rent on Rogers Road. They are a mixture of two and three bed properties with off-road parking and gardens.

Under the terms of the CLT we need to ensure that we meet the housing need in the village (and nearby villages if there is no need in Swaffham Prior) every five years.

We are now open to applications for five-year tenancies starting in **March 2021**. Existing tenants are also invited to re-apply for a property as part of this process, however all new tenancies will be awarded in line with the allocations criteria.

If you are interested in applying for a home, please download the form and allocations criteria from the village website [www.swaffham-prior.co.uk/pc/CLT.html](http://www.swaffham-prior.co.uk/pc/CLT.html) or email [emmalindseyfletcher@gmail.com](mailto:emmalindseyfletcher@gmail.com) for the forms to be sent to you.

Applications are to be submitted **hard copy** through the letterbox at 50 High Street, Swaffham Prior (yellow house, grey door opposite the churches) **by 31<sup>st</sup> August 2020**. Allocations will be completed by the end of September 2020.

Rents will be calculated in March 2021 however the maximum rents will be two bed £640/month and three bed £750/month.

---

## Neighbourhood Watch

---



Suffolk people are being asked to continue their great efforts, which are successfully reducing the spread of COVID-19. However, we are not out of the woods yet. The number is continuing to rise, although more slowly, which is why it is crucial that people keep following the instructions.

These are:

- ✓ Keep staying at home
- ✓ Keep working from home where you can
- ✓ Keep 2 metres apart if you go out
- ✓ Keep exercising safely
- ✓ Keep washing your hands with soap and water
- ✓ Keep self-isolating if you or anyone in your household has symptoms
- ✓ Keep travelling by car, bike or walking
- ✓ Keep staying safe at work
- ✓ Keep shielding yourself if you are vulnerable
- ✓ Keep supporting local businesses
- ✓ Keep looking out for each other

### Kevin Evans

Secretary, East Cambridgeshire Neighbourhood Watch  
01353 614892 or kevin.g.evans@ntlworld.com

## Burwell & Reach Car Scheme

If you are unable to use conventional transport, the scheme can help you to travel from Reach or Burwell to:

*Chiropodists, Dentists, Doctors, Opticians, Shops, Visit Friends . . .*

Transport cannot be provided for Hospital Outpatient Appointments

Contact hours are 8.30am to 5.00pm Monday to Friday – please give us 24 hours notice

01638 742543 (answerphone) and we will return your call

---

## Out and About Summer 2020

---

Although little owls can be seen during daylight hours all year round, one took me by surprise near Great Lane when it flew over the car early one July morning. Britain's smallest owl has a distinctive undulating flight on short rounded wings, quite unlike any other owl. Pairs maintain a lifelong bond and perhaps strangely, much of their hunting is undertaken on foot with owls actively running to capture their prey.



A drowsy hum from the bumblebee nest in our stable feed shed accompanies equine duties although I note this silences in wet weather. We keep an unthreatening distance and coexist easily (male bees have no sting, the stinger is a modified egg-laying device that only females have). The site is also quite safe from badgers who enjoy nests of eggs and larvae. I'm undecided whether these are white or buff-tailed bumblebees, confusingly, the buffs can also be white! If planting for bees avoid using double-flowers which prove too complicated and difficult to access. Bees are capable of pollinating tomato plants where pollen is too tightly stored in anthers for other insects to open.

There was a calamity in our stable when the dry and brittle nest created by swallows last year was reinhabited by a family whose combined weight caused it to break and fall. Fortunately, onto a pyramid of soft hay positioned below as a precaution against such mishap. The young chicks crawled to a ledge and in time, fledged safely from there. Sadly, the second clutch of eggs were raided by pesky magpies.

Our noticeably drier weather conditions have resulted in swallows struggling to find the wet and muddy pools required for nest building material, this is a very real problem. We bought deep ceramic swallow bowls on the Internet as alternative nests for a few pounds, they were immediately used for the next successful brood.

Our garden borders are high and rambling, unkempt might be the term. However, they brim with insect life, moths particularly favour the honeysuckle and butterflies the buddleja, phlox and valerian. There's an important butterfly survey currently taking place, open to all, please consider taking part, details can be found at: <https://bigbutterflycount.butterfly-conservation.org/>

I was so riled/dismayed when the Weirs Road verges and nearby lanes were mown, no - scalped, of their vitally important wildflowers, plants and vegetation that I was driven to write to the Highways Agency, Cambridge County Council and our parliamentary MP Lucy Frazer. This is surely an outmoded practice at a time when habitat needs protecting not decimating. It is widely documented that insect populations are reducing at an alarming rate, they are the start of the foodchain for birds and mammals and of course pollinate crops. For vehicle or pedestrian visibility, a 2ft swathe need only be mown each side, leaving the rest to flourish. Plantlife state that 700 species of wildflower grow next to roadsides, 45% of the nation's total.

We leave patches of three types of nettle - red/white dead and common in the field and garden, all are of inestimable value for insects. Undisturbed, they offer a haven for 40 insect species, provide exclusive food for the caterpillars of small tortoiseshell & peacock butterflies in addition to the larvae of a dozen moths. When wilted, they have medicinal properties that benefit laminitis in equines. Medical science supports the value of extracts to alleviate various conditions - high blood pressure to arthritis and gout, hay fever to haemorrhoids!

Nick Acklam's Nature Notes:

24 May: two sizeable clusters of Brown Tail moth caterpillars on blackthorn alongside Barston Drove. The moths were moving out of their white silk protective tents, stripping the host shrub of leaves as they went.

25 May: a Cuckoo heard from our garden for the first time in some years. I assume (on the basis of very little) that it is one of those that has been regularly calling this year from trees on either side of the Lode.

27 May: a Cuckoo sighted in the trees by Pedva fishing pit. It appeared rusty brown rather than the usual steel grey. This might have been due to light conditions but could well have been a rufous form of the bird.

24 June: I evict from our house a Dark Crimson Underwing moth and a Blue tailed damselfly.

26 June: in the meadow at Reach Wood two pairs of Marbled white butterflies stand out from very large numbers of Meadow Browns.

The meadow seems particularly full of flowers this year including a robust form of clover that I can't identify.

28 June: a pair of Muntjac deer bark at each other from scrub on either side of the Pedva fishing pit. It is mid morning and they seem indifferent to the nearby presence of a human and a dog.

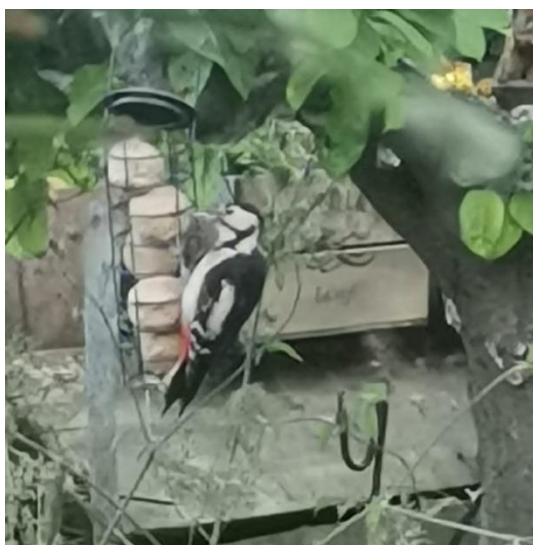
18 July: Gatekeeper butterflies on brambles lining Old Bar Drove by Tubney Mere.

20 July: a rare, very close view of a Green Woodpecker as it flew north along the Environment Agency Track. Striking flashes of red, yellow and green. The spotted cheeks and body reveal it to be a juvenile.

June: Lesley Boyle moved a canvas pool membrane and disturbed a mature, lengthy grass snake.

(England's largest snake grows to over a metre. Interesting fact - when a grass snake feels very threatened it will lie on its back, become very limp, opens mouth and hang tongue out to pretend it is dead).

3 June: Sarah Keughen - was delighted to see bee orchids near Reach tennis court. And a great spotted woodpecker visits their garden in The Hythe.



(We noted 2 vivid pink pyramidal orchids at nearby White Fen, like many orchids they require a specific fungus to be present in the soil in order to bloom).



18 June: Claire Halpin MacDonald emailed to say the pair of local mute swans had nine cygnets 'it's just hard to believe their number. There is one noticeably small one. The family visit periodically - here yesterday probably gone today'.



19 July: Ron - mentioned the noticeable lack of swallows flying along Pit Lane and that sadly they did not nest in his field buildings this year. However, swifts again nested beneath the eaves of their house and the youngsters successfully fledged, amazingly he was able to time this perfectly and capture the moment in a series of excellent photos taken from an upstairs window. Penny mentioned 'the young swifts flew out of the nest but they are still here, so presumably just practising for the big off, usually at the beginning of August'.



20 July: Martin Goodchild watched a red kite fly over Great Lane, mobbed by crows.

Three swallows fell from the nest and survived.



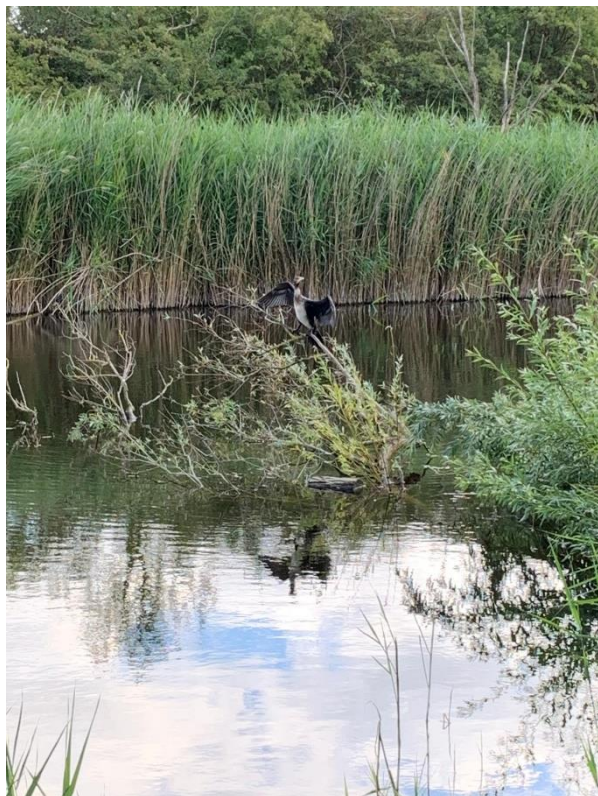
Fourth fallen swallow also made it.



Ron's lambs, the small one asleep in the sun-warmed metal feed trough.



Rosie Almond photographed this cormorant at the fishing pit, she said it stayed put for nearly 5 minutes.



**Joss Goodchild**  
jossbmg@icloud.com

---

## Anglesey Abbey

---



To help ensure that more of you, your friends and families, can experience some well-deserved rest and relaxation at Anglesey Abbey, we're pleased to announce we'll be freezing our entry prices for non-members for 2020 and introducing three off-peak months: January, June and November.

**Chloe McMath**  
Senior Visitor Experience Officer

---

## Pets Corner

---



This photo was taken two days before our ancient hen (on the left) died in July. She was a lovely addition to the garden, docile and friendly, I bought her as a mature bird and we had her for over 10 years. A hen's characteristics become obvious in a small garden like ours where only two hens are kept that free range. She laid an egg a week before departure, these had deep brown outer shells and pale porcelain blue inners. Much missed.

---

## Burwell Museum Coach Trips

---



*Due to Coronavirus these trips cannot be guaranteed please phone Barbara on the numbers below to get confirmation or otherwise.*

Thurs 15<sup>th</sup> Oct Norwich £18

Our **Brick Lane Christmas Show and Dinner** is planned to take place on Friday 27<sup>th</sup> Nov and cost £74.50.

Tickets are on sale at Tina's North St, Burwell or ring Barbara on 01638 741581 or 07887 712296

---

## IT Advice

---

Hello,

With people working from home, sometimes on a spare laptop or demanding more from their tablets, I thought I would run through the Open Source software that I have found useful. This software is free and benefits from sharing improvements and add-ons that volunteers have developed to help with a particular problem or function. These suggestions are then tested and examined by the program's organisation before being released. Contributors include Researchers, Universities and commercial organisations.



No one is allowed to charge for Open software, although the medium of distribution and any support can be charged for. I will include the official site's address so that you can download knowing that you have the latest version and no malicious and/or unwanted programs. Legacy versions Open Source software are often available for running on outdated computers but do be wary of connecting them to the Internet.

You will see that most of these programs work with Linux, for those of you that are unfamiliar with it, Linux is a free, open operating system, so it is used instead of Windows or Mac OS. Probably the most common place to find it now is on the Raspberry Pi or its competitors, although it is buried unseen in many of the electronic gadgets we use and forms the basis of Android. It shares a common origin with Mac OS and iOS in Unix.

There are many variations of Linux, depending on your needs. If you want to use a computer that had Windows XP, one way of making it secure is to remove Windows and install a version of Linux suitable for low-powered computers. There are versions available for first time users. Most versions come with Firefox, Libre Office and other programs already installed or available from a "store".

I will start with Libre Office ([libreoffice.org](http://libreoffice.org)); this is similar to Microsoft Office and is able to work with and save Microsoft compatible files. Libre Office contains a Word Processor, Spreadsheet, Presentation (Power Point) and graph making programs, among others. For licensing reasons, it is more developed than its parent, Open Office. It is straightforward to use and there is plenty of help online. Until recently it was all I used although I now subscribe to Microsoft Office 365, principally for the Cloud storage. Libre Office is available for Windows, Mac and Linux. Libre Office is ideal for work or study use.

The main program missing from Libre Office when compared with Office 365 is Outlook. There is a free program; Mozilla Thunderbird ([thunderbird.net](http://thunderbird.net)), which is very good and will deal with emails, contacts and a calendar. The Mozilla Foundation also produces Firefox which is a popular alternative to Chrome.

When it comes to photo editing the Gold Standard is Photoshop, but there is an open alternative; GIMP ([gimp.org](http://gimp.org)) which runs on Windows, Mac and Linux. GIMP is an immensely powerful program but like any program with multiple choices it has quite a steep learning curve, however there is a lot of help available on the Web. It is worth mentioning that Adobe also release Photoshop Essentials and Lightroom free for Windows, Mac, iOS and Android. These are basic photo editing programs based on a subset of Photoshop and well worth a look for home use, especially if you are familiar with Photoshop.

If your interest is in sound then look at Audacity ([audacityteam.org](http://audacityteam.org)). You can record sound from your computer or an external source like a microphone, edit it, add tracks to it and save in a variety of formats. There are tools for restoring vinyl and cassette recordings and even for correcting records played at the wrong speed, e.g. a 78 played at 33 1/3. This is a very versatile program but as with any program with multiple choices it needs a little time to get used to.

A program you will find on all my computers and my phone is VLC ([videolan.org](http://videolan.org)) this is the "Swiss Army Penknife" of video playing. It will play DVD's, Blu-rays, Media Streams like YouTube and virtually every video format and record them if required. It can be used as a screen recorder for Gamers. It can convert formats and compress video to take less space on a phone or tablet. You can even use your phone to remotely control VLC playing on a computer, especially useful if your computer is linked to your television as I described in an earlier article.

If you are serious about using your computer, phone, tablet or even an Xbox or Raspberry Pi to watch movies, TV, listen to music and show your photos the best program is Kodi ([kodi.tv](http://kodi.tv)). Unfortunately, Kodi has been maligned in the popular press because third parties have created extensions which enable people to watch pay to view channels free illegally, but Kodi itself is a perfectly legal and widely used program. Kodi will catalogue your Movies, Music, Photos and streaming services for browsing and easy access.

So, there you have it. You do not have to lay out a lot of money to bring an old computer back to life or to be able to do something on an occasional or temporary basis that does not justify a big outlay on a commercial program. There is the additional advantage that if you have a particular requirement someone has probably released an add-on for it.

**David McMillan**  
741259



---

## Wicken Fen

---



*New temporary route on Sedge Fen by Julia Hammond*

We've just opened a new temporary route for pre-booked visitors on Sedge Fen. While we've all been in lockdown the wildlife at Wicken Fen has moved into areas we haven't seen them in before, and we have a number of nesting birds close to our existing visitor paths. We've created a new route to give the wildlife some space, until the young have fledged. It's a one-way path so that visitors can enjoy the route safely.

There's lots of wildflowers and butterflies throughout the reserve, and you can park in the car park between 9am and 5pm (last entry at 4pm) without booking and take a stroll out to the wider reserve paths. Our café is open between 10am and 4pm offering take away hot and cold drinks, ice creams, cakes and light snacks.

We're going to be reopening more of the Sedge Fen over the next few weeks. It's likely that routes on the Sedge Fen will be bookable for the foreseeable future, so check our website before visiting for the most up to date information about what's open and how to book: <https://www.nationaltrust.org.uk/wicken-fen-nature-reserve>.

### Julia Hammond



---

## Cambridgeshire Fire and Rescue

---



CAMBRIDGESHIRE  
FIRE & RESCUE SERVICE  
pressoffice@cambfire.gov.uk  
www.cambfire.gov.uk

PREVENTING PROTECTING RESPONDING

### Water Safety



The dangers of open water . . . .

- The water is often far deeper than people might think
- It's very cold, which can quickly cause cramp and breathing difficulties
- It may contain hidden rubbish and debris, such as shopping trolleys and broken glass, which can cause injuries and lead to drowning
- Sometimes it can be polluted which could lead to illness.

During the school holidays, and in particular in hot weather, increasing numbers of children are drowning. On average, there are 50 of these tragedies each year in the UK.

If you do decide to swim in a lake or river, make sure you keep yourself as safe as possible . . . .

- Don't jump or dive in as the water can contain unseen hazards and be far deeper than it looks
- Never swim near weirs or locks as there are often dangerous currents
- Always make sure someone on land knows you are swimming

If you see someone in trouble in water

- Do not hesitate - call 999 immediately with clear details of your location
- Send someone to the nearest road to flag down the emergency services when they arrive and direct them to the incident.
- Find the nearest life ring and throw it to the person. If a life ring is not available, throw in anything that could help them float, for example, a football.
- If someone goes under the water, mark on the water's edge the place they were last seen with something like a piece of clothing.

## Advertisers List

CATEGORY	Page
<b>Accommodation</b>	
Hilary's Cottage, Swaffham Prior	3
The Meadow House, Burwell	3
<b>Architectural Drawings</b>	
Ely Design Group	2
<b>Cars</b>	
Manchetts Service and Repair	5
<b>Carpet and Upholstery Cleaning</b>	
Rothwell's Carpet Cleaning	7
<b>Chimney Sweep</b>	
Brush Electric Sweep	6
NCS	14
<b>Chiropodist</b>	
Stepwise Footcare	10
<b>Cleaning</b>	
Hazel's Cleaning Services	9
Ovenpad	2
<b>Computing</b>	
Burwell Computers	9
Technology Problems?	13
<b>Dry Cleaners</b>	
Tina's, Burwell	2
<b>Electricians</b>	
Anglia Gas and Electrical Services	16
K Domestic Electrical Solutions	16
<b>Engineering Services</b>	
N & G Marsh of Burwell	3
<b>Financial Services</b>	
Independent Financial Solutions	6
<b>Food and Drink</b>	
Red Lion, Swaffham Prior	1
White Swan, Quy	2
<b>Funeral Directors</b>	
Southgates	12
<b>Gardens and Gardening</b>	
Bannold	15
C.R. Contracting	5
C W Kirk Lawnmowers	14
D-Branch	13
Fenland Spirit	5
Four Seasons Tree Services	Mag 19
John Reed Landscape Gardener	7
Summit Landscaping	11

CATEGORY	Page
<b>Gifts</b>	
Tina's, Burwell	2
<b>Haberdashery and Mending</b>	
Tina's, Burwell	2
<b>Liquid Propane Gas (LPG)</b>	
Anglia Gas and Electrical Services	16
<b>Oil</b>	
AMH (now East Cambs Services)	11
Browns of Burwell	9
Paul Braybrooke Oil Boiler Service	Mag 5
<b>Painting and Decorating</b>	
Andy Pumfrey Painter and Decorator	10
<b>Pest Control</b>	
D-Branch	13
<b>Plumbing and Heating</b>	
AMH (now East Cambs Services)	11
Drain-Plumb Plumbing, Heating and Drain Services	8
Harrison Plumbing and Heating	8
NCS	14
Saniclean Drain and Plumbing Service	6
<b>Pre-School</b>	
Red House Day Nursery, Burwell	16
<b>Roofing</b>	
Kennedy Roofing	11
<b>Sport and Recreation</b>	
Bottisham Sports Centre Gym	4
Bottisham Sports Centre Swimming	4
<b>Technology</b>	
Technology Problems?	14
<b>Wellbeing</b>	
Burwellness	10
<b>Window Cleaners</b>	
K. Wells and Son	14
<b>Woodwork</b>	
Paul Waldmann Woodwork	13

### Advertising Rates

£34 for a quarter page (w 90mm, h 120mm) or  
£62 for a half page (w 180mm, h 120mm)  
per year (6 issues)

Please contact David Parr on 01638 744081  
or 07887 563720 or email  
davidmparr@btinternet.com

# FOUR SEASONS TREE SERVICES

## Qualified & Professional Tree and Client Care

PRUNING ● LOPPING ● FELLING  
PLANTING ● REDUCING & RESHAPING  
CROWN RAISING ● HEDGE TRIMMING  
THINNING ● POLLARDING ● STUMP REMOVALS  
OVERGROWN GARDENS PUT BACK INTO SHAPE  
FRUIT TREES TREATED ● LOG & WOODCHIP SALES



FREE ESTIMATES & ADVICE WITH NO OBLIGATION

For quality jobs at a competitive price call:

**Home: 01353 721665 - Mob: 07771 707921**

All work carried out to BS 3998 Standard

*A genuine family managed business est. for over 30 years - Fully Insured*



Registered  
Waste Carrier



This company offers a 7 day cooling off period

---

## Tales from a Reach Garden

---

2020 has been a very strange year, even if you try to ignore the Covid 19 pandemic. We had astonishingly good weather in spring – bright, cloudless days followed by mild evenings (in May at least). However, apart from one hot week in June, summer has been cool, very gloomy and many nights have been colder than expected for this time of year. The sunny spring weather has ensured a good apple crop later this year. Our plums have also done well – often the blossoms in May are damaged by frost. Not this year. Even our pears were doing well, until the squirrels noticed the small fruits and gobbled the lot by the end of June! The burgeoning pear fruits are hard but nut-like and too tempting for at least one of the squirrels that venture into our garden. I was seriously annoyed as we'd never had such ideal conditions for their flowering and pollination.



Our broad beans also benefitted from the sunny conditions in spring. We had a very good crop. They've all been picked, podded, eaten or frozen and the plants uprooted before the end of July. Our pea plants started very well and we picked a lot of peas, mangetout and sugar snaps in June, but now the pea plants are convinced that autumn has arrived and have succumbed to powdery mildew which normally forms in cooler autumn conditions as a result of the morning dews.



*Powdery Mildew on pea leaves*

The pea pods growing on the infected plants are not developing properly, so these plants have been dug up and will be burnt. Not all the "peas" are affected. We have a variety of mangetout called "Shiraz" which is still doing well even though it is growing in the same pea bed. This variety develops pretty pink flowers that produce purple pods which are easy to spot and pick.

I have grown other green-podded varieties of mangetout in the past, but the pods weren't always obvious and I'd spot them only when the peas had grown enormous inside the pods.

Mangetout are a bit like runner beans in that it's best to pick them before the seeds are fully formed. The pods can be steamed and eaten whole – or you can eat them raw if you prefer. When pods are picked at the right stage, the plant will produce more flowers to compensate, so that even more pods can be picked. Unlike other varieties of peas, these plants will keep producing pods as long as you keep picking them throughout the summer. I also give them a bit of a feed with some tomato fertilizer to help them along. Sugar snap peas are very similar. The pods are smaller and the peas do form inside quite rapidly, but they can be eaten whole, like mangetout. I have yet to find a purple-podded version, so they can be difficult to spot. I grow a variety called "sugar Ann".



*Shiraz mangetout ready to pick and unaffected by mildew*



*Leaves of "Sugar Ann" sugar snaps have mildew*

So why grow them instead of, or even as well as peas? The answer is they ripen more quickly and they have a longer growing season. Once you've picked peas when they're fully ripe, the plants can be exhausted. With extra feeding it is possible to get another crop of peas, especially from early varieties, but the second crop is not as large as the first. Plus, as I've realised this year, if you're very lucky you may even get to pick the peas before mildew affects the first crop...

**Danuta Gibson**

---

## Reach Grant Fund

---

The Grant Fund replaces the Amenity Fund and exists to fund community activities in Reach.

The Grant Fund replaces the Amenity Fund and exists to fund community activities in Reach.

Application forms should be downloaded from: [www.reach-village.co.uk/grant\\_fund.html](http://www.reach-village.co.uk/grant_fund.html) and should be completed and sent to the Clerk, Susan Bailey whose contact details are above.

---

## Burwell Museum and Windmill

---



The Burwell Museum and Windmill have re-opened but with reduced facilities and opening hours.

They are open only on Thursdays, from 11.00am to 3.00pm with the first Thursday being the 6<sup>th</sup> of August.

To see what will be available, please visit:

<https://burwellmuseum.org.uk/event/post-lockdown-opening/>

---

## Food Focus

---

### A homemade tikka masala with peshwari naan

I'd say this is a special occasion meal as it is a bit of a faff, but if you can be bothered it really is worth the effort. Despite the fact that there are a lot of ingredients, in my case most of them were in the cupboard, so in that respect it's quite possibly a store cupboard meal.



After marinating the chicken and preparing the masala sauce the aromas filling the kitchen were so delicious that even my 9 year old, non-curry eating daughter exclaimed how wonderful dinner smelt!



The origins of chicken tikka masala are disputed, but seemingly it is one of the most popular dishes in the UK whether it emerged from the Indian sub-continent or not. I also reckon, with little evidence I might add, that it is one of those dishes that is more appealing to non-curry lovers.

#### Chicken or tofu marinade (serves 5)

- 3 boneless, skinless chicken breasts or equivalent tofu
- ½ cup plain yogurt (125 g)
- 2 tablespoons lemon juice
- 6 cloves garlic, minced
- 1 tablespoon minced ginger (I lazily bought a jar of minced ginger as you need it for the masala sauce too)
- 2 teaspoons salt
- 2 teaspoons ground cumin
- 2 teaspoons garam masala
- 2 teaspoons paprika

## Method

Cut the chicken into bite-sized chunks. Combine the marinade ingredients, stir in and cover the chicken well and marinate for an hour minimum or overnight if you're organised! Preheat the oven to 500°F (260°C). Line a high-sided baking pan or roasting tray with parchment paper. Place the marinated chicken pieces on bamboo or wooden skewers, then set them over the prepared baking pan, making sure there is space underneath the chicken to help distribute the heat more evenly. Bake for about 15 minutes, until slightly dark brown on the edges.

## Masala Sauce

3 tablespoons oil  
1 large onion, finely chopped  
2 tablespoons minced ginger (if you've bought the jar you'll be grateful!)  
8 cloves garlic, minced  
2 teaspoons ground cumin  
2 teaspoons ground turmeric  
2 teaspoons ground coriander  
2 teaspoons paprika  
2 teaspoons chili powder  
2 teaspoons garam masala  
1 tablespoon tomato puree  
3 ½ cups tomato sauce (800 g) I used passata  
1 ¼ cups water (300 mL)  
1 cup heavy cream (250 mL)  
¼ cup fresh coriander (10 g), for garnish

## Method

Heat the oil in a large pot over medium heat, then sauté the onions, ginger, and garlic until tender but not browned. Add the cumin, turmeric, coriander, paprika, chili powder, and garam masala and stir constantly for about 30 seconds, until the spices are fragrant. Stir in the tomato puree, tomato sauce, and 1 ¼ cups of water, then bring to a boil and cook for about 5 minutes. Pour in the cream.

Remove the chicken from the skewers and add to the sauce, cooking for another 1-2 minutes. Garnish with coriander and serve over rice and or alongside naan bread. I did spinach with it too as its easy to prepare and goes well.

## Peshwari Naan/ Flat Bread (makes 6-8)

500g plain white flour  
1 ½ tea spoon bicarbonate  
1 ½ tea spoon baking powder  
1½ teaspoons salt  
1/2 cup plain yogurt  
50g chopped sultanas  
3 tsp sugar  
30 grams desiccated coconut. Or use coconut cream or Coconut milk to make up water quantity  
Enough Water to make into firm dough (I actually just used coconut cream)

Knead lightly, take small pieces make into rounds and roll out thinly and cook on both sides until brown in dry heavy pan. If not eating immediately they can be reheated in oven covered by foil.

**Catherine Gibson**

## The Dyke's End

We're open again and pleasingly business is good.

### TEMPORARY OPENING HOURS

	Bar	Kitchen
Monday:	Closed	Closed
Tuesday:	Closed	Closed
Wednesday:	5pm-10pm	5.30pm-8.30pm
Thursday:	5pm-10pm	5.30pm-8.30pm
Friday:	5pm-10pm	5.30pm-8.30pm
Saturday:	12pm-10pm	12-2pm, 6-9pm
Sunday:	12pm-9pm	12pm-3pm

We are now a walk-in venue and will be accepting walk-in tables of up to six people. We only take reservations for Sunday lunch.

We still offer our very popular takeaway service . . .

**THE DYKE'S END**  
TAKE-AWAY MENU  
WED-FRI 5.30-8.30PM & SAT 6-9PM  
SUNDAY - PLEASE SEE THE SEPERATE SUNDAY LUNCH MENU

**MAINS**

Crispy Battered Haddock, Skin on Fries & Garden Peas (GFS)	£10.00
Scampi, Skin on Fries & Garden Peas	£9.00
6oz Homemade Beef Burger, Cheese, Bacon, Lettuce, Burger Sauce, Skin on Fries & Onion Rings	£10.00
10oz Gammon Steak, Fried Egg with Mixed Salad OR Fries & Garden Peas (GF)	£10.00
Pie of the Day, Mash or Skin on Fries, Seasonal Veg & Gravy	£10.00
Nut Roast & Halloumi Burger, Relish, Skin on Fries & Onion Rings (V, N)	£10.00
Caesar Salad with either Chicken or Halloumi	£10.00

**KIDS CHOICE £6 each**

Crispy Battered Haddock, Skin on Fries, Garden Peas or Heinz Beans  
Scampi, Skin on Fries & Garden Peas or Heinz Beans  
Cheeseburger & Skin on Fries  
Chicken Goujons, Skin on Fries & Garden Peas or Heinz Beans

**DESSERT £5 each**

Honeycomb Cheesecake, Vanilla Ice Cream  
Chocolate Salted Caramelised Biscuit Cheesecake, Vanilla Ice Cream  
Chocolate Brownie, Chocolate Sauce, Vanilla Ice Cream (V, GF)  
Sticky Toffee Pudding, Toffee Sauce, Vanilla Ice Cream (V)  
Peach Eton Mess (V)  
Cheeseboard, Stilton, Brie, Mature Cheddar, Crackers & Chutney (£2 supp)

**HOW TO ORDER**

Please call or email to place your pre-order  
book@dykesendreach.co.uk / Tel: 01638 743 816

This menu is for take-away orders only

We **do not** provide Cutlery/Napkins

Payment by Contactless/Apple Pay/Bacs/Cash

Allergies or Intolerances  
Please speak to a member of staff before ordering

**Matt and Mel**

743816

---

## Letter from the Vicarage

---

We live in I wonder how you're managing the 'new normal'? We've all shared together in such a difficult time and now we're all adjusting to a strange new way of living. As we move forwards, my prayer would be that the strong sense of community that helped us all through this time may continue and would love to hear from you about ideas for how we can do that.



Work on the repair and conservation of the arch behind St Etheldreda's was able to start at the end of May, having been postponed at the beginning of the lockdown, and we hope that this will soon be completed and will slow down the rate of future deterioration. Thank you very much to the villagers who have kindly donated clunch to be used.



Although there have been some unavoidable delays over the last few months, we are working with the church architects to finalise plans for the refurbishment of the church itself and once these are complete, will be able to continue the process of obtaining the necessary permissions, going to tender and then starting the work.

Like many organisations, we had to close the doors of our buildings, but Church has never been confined to a building and over these last few months we found new ways of praying, worshipping, connecting with each other and our community and supporting those who were in need. We have been taking funerals throughout the lockdown, at the graveside or at the crematorium and supporting families who have sadly lost loved ones during this time. Our church services moved online in the middle of March. Easter was rather different, with the Easter candle being lit at dawn in my back garden and a video posted on Facebook, but we were still able to celebrate.

We continue to record daily prayers which go live on our Facebook page at 8.30am and 8.30pm each day, with a link on our website for those not on Facebook and have a Sunday service on Zoom, as well as using Zoom for our groups for families and children. For those without internet access, phone calls have been a lifeline and I am so grateful to our tech team, who have been able to set up a phonenumber to dial in and listen to recordings of services – call 01638 598958, for a local call charge.

Some of our church members have been privileged to be involved with Burwell Help Group – a very big thank you and well done to those who had the idea and got it up and running so quickly and have worked so hard to support our community. I am also very grateful to Steve Smith at the Co-op, who has given space for the Ely Foodbank collection point that would normally have been in St Mary's and to those who have given so generously.

Behind the scenes, systems have been set up to arrange for local delivery of food parcels. If you find yourself in need of the support of the Foodbank, please do get in touch, or with Ely Foodbank directly on 01353 468626.

What happens next? We've begun to open our church buildings for individual, private prayer, initially for a couple of sessions at week, leaving 72 hours between opening. If the advertised times don't work for you, please let us know and we can try to move the times. At the time of writing, we are looking forward to our first services back in our church buildings, though there are a lot of measures that have had to be put into place, to comply with social distancing and hygiene requirements.



*St Etheldreda's set up for social distancing*

There are significant changes to how we would usually gather, so as we move forwards, we will be continuing our online prayers, services and groups, to enable as many as possible to join in. Times may vary once we start having services again in the church buildings, until we have established new regular patterns, so please do check our noticeboards, website or our Facebook page for more details [www.facebook.com/stmarysburwell/](http://www.facebook.com/stmarysburwell/).

Each week, we send our pew sheet by email, which gives updates about what we're doing. If you'd like to be added to that mailing, you can sign up via our website [www.stmarysburwell.org.uk](http://www.stmarysburwell.org.uk). If you'd like to join in on our Zoom gatherings, including Refresh Café for pre-school children and families, or Messy Gathering for families with children of all ages, please email me or Pat Chalmers at [administrator@stmarysburwell.org.uk](mailto:administrator@stmarysburwell.org.uk).

Please get in touch if you would like to talk, to pray, or need practical help. God bless you, and those who are dear to you.

**Revd Dr Eleanor Williams**, Vicar of Burwell with Reach, 01638 741262 [vicar@stmarysburwell.org.uk](mailto:vicar@stmarysburwell.org.uk)

## Know Your District Councillors



As we attended the District Council's Annual Meeting by Zoom video conference, we realised that we had been your District Councillors for a full year. The year started as we had expected – getting to know people locally, getting the Parish Council meetings and village magazine deadlines into our diaries, setting up our Councillor 'surgeries' and 'Meet your Councillor' dates, visiting the summer village fairs/fetes/feasts and attending the District Council and Committee meetings. Thank you to all of you for helping us to become part of your village life.

We were just starting to feel familiar with our role and responsibilities when everything changed. The impact of Covid-19 has brought the most rapid change many of us will have experienced in our lives. For too many it has ended their lives or taken loved ones from them and they have our sympathy. Unfortunately, as politicians, we must acknowledge that the official response has too often been inadequate and some senior people have not complied with the regulations which the rest of us have followed. But what we have seen across our villages, and indeed elsewhere, has been truly inspiring. Parish Councils and voluntary groups making sure everyone's needs are met – from dog walking to shopping. Our local pubs and shops supporting the community with deliveries, takeaways, pop-up-shops, delivering hot food to people who are housebound. Perhaps the most imaginative response we heard of was a musician who would sing a requested song to people who were housebound. As we come out of lockdown, we need to remember that there will still be people who need help, perhaps because they are shielding or vulnerable, or because they are hurting from their loss, or because they have suffered financially. I hope we can keep our great community spirit going to help our neighbours in the best way for them.

 **DailyHOPE**

A free phonenumber of hymns, reflections and prayers

**0800 804 8044**

Are you in need of some daily hope during this lockdown?

We have a new FREE telephone line for you to ring to hear comforting hymns, daily prayers and reflections.

 THE CHURCH OF ENGLAND Faith in Later Life CONNECTIONS

## Know Your Parish Council

Your councillors are:

Alex de Giorgio-Miller	Chair	07771 348013
Charlotte Cane	Vice Chair	741064
Nick Acklam	Councillor	743749
Cristine Fletcher	Councillor	07763 529866
David McMillan	Councillor	741259
Andrew Trump	Councillor	07980 955490
Vacancy	Councillor	

Charlotte Cane	District Councillor
John Trapp	District Councillor
Joshua Schumann	County Councillor

Your Clerk is Susan Bailey  
29 Great Lane Reach CB25 0JF; 01638 743794  
[clerk@reachparishcouncil.org](mailto:clerk@reachparishcouncil.org)

Meetings take place in the Village Hall on the first Wednesday of each month. They start at 7.45pm and all Reach villagers are welcome to attend.



The District Council's Annual meeting can still be seen on YouTube at:  
[www.eastcambs.gov.uk/meetings/council-21052020](http://www.eastcambs.gov.uk/meetings/council-21052020).

Cllr Lis Every was re-elected as Chair of Council, with Cllr Alan Sharp elected as Vice Chair. Cllr Anna Bailey remains as Leader of the Council, with Cllr Josh Schumann as her deputy. Cllr Lorna Dupre is Leader of the Lib Dem Group, with Charlotte as her Deputy. John is on Planning and on Finance & Assets and Charlotte is on Finance & Assets and the Bus Services Review Working Party.

Annual Council agreed to set up a Working Party to help East Cambs recover from COVID-19. Its aim is to work with business, Parish Councils and community groups as well as the County Council etc to ensure our local economy recovers and that we enhance the good things which have come from this crisis – notably the community help groups and the increase in cycling and walking as opposed to car journeys which have led to cleaner air. Charlotte proposed the motion to set up this working group and summarised its purpose as to help drive an environmentally, socially, and economically sustainable recovery for East Cambs. The working group will be contacting Parish Councils, Community Groups, businesses, and organisations throughout the district and we would like to hear from individuals, so please get in touch with us if you have any ideas which you think this group should take forward.

We are holding our surgeries and 'Meet your Councillors' by Zoom. The next one is Tuesday 21 July – the surgery will start at 6.00pm, please phone John on 01223 812120 or Charlotte on 07976 607512. 'Meet your Councillors' will start at 7.00pm, please contact [john.trapp@eastcambs.gov.uk](mailto:john.trapp@eastcambs.gov.uk) for the link if you want to join.

Charlotte went walking at dusk a few days ago and saw several bats flying, which is not unusual this time of year. She learnt more about these beautiful creatures at:  
<https://www.wildlifebcn.org/blog/megan-owen/introduction-uk-bats>

John and Charlotte still cannot have face-to-face meetings or visit people. But we are always happy to be contacted by phone or email:  
[john.trapp@eastcambs.gov.uk](mailto:john.trapp@eastcambs.gov.uk) - 01223 812120  
[charlotte.cane@eastcambs.gov.uk](mailto:charlotte.cane@eastcambs.gov.uk) - 07976 607512.

Contact us about anything – we may not always have the answer or be able to help you ourselves, but we will do our best to find someone who does know and can help.

Charlotte also has a Facebook Page – you can visit the page at [fb.me/charlottecanelibdem](https://fb.me/charlottecanelibdem) and send messages to her at [m.me/charlottecanelibdem](https://m.me/charlottecanelibdem).

### **Charlotte Cane and John Trapp**

---

## **Cricket Report**

---



### **Sunday 12th July Guilden Morden Cherubs (104) lost to Reach (125) by 22 runs**

Our hopes of finally beginning the season in early July were dashed by the Prime Minister's verdict that a cricket ball is a 'natural vector of disease'. But a week on, Boris said he was referring the decision over recreational cricket to the third umpire (ie either the government's SAGE committee or Dominic Cummings, quite possibly the latter), which ruled we could play so long as we didn't give visiting teams tea and we sanitised our balls. Thus we were able to strap on our pads for an opening away game against Guilden Morden Cherubs, with a rush of new faces in the Reach team.

It was a fruitful visit, albeit following a typical Reach collapse which left us with not a lot for quite a lot. However, a partnership between Will Day (36) and Rob Steed (43) succeeded in lifting us to a semi-respectable score, acquired after a grinding 32 overs. Guilden Morden Cherubs cannot have seen the target as onerous. However, the violins were soon playing for them as they collapsed to 103 all out, with Gavin Taylor and Hector Keutgen each taking three wickets. The afternoon ended in tragedy, however, with our Director of Marginal Improvement, Rob Steed, discovering that, as well as being a natural vector for disease, a cricket ball is also a natural vector of injury – sticking a boot out to stop a ball on the boundary, he broke his ankle, with the result his season was over as quickly as it began.

**Sunday 19th July**  
**Reach (145) lost to Teluga Association of Cambridge (158) by 13 runs**

TAC has been a regular nemesis for Reach in recent years, although has proved a popular fixture not least for their habit of turning out with curries for tea. Sadly, that was not allowed this time around, but it seemed as if we might be compensated with a win. Halfway through our innings we were halfway towards overhauling TAC's score, with only two wickets down. But it was not to be. The familiar clatter of wickets left us short.

**Sunday 26th July**  
**Reach (152) beat the Journeymen (124) by 28 runs**

The Journeymen, a travelling team garnered from the innards of London, made their first journey to Reach and put an impressive performance with the natural vector of disease, bowling well and keeping it tight in the field. But through determination, Reach wore them down. The words 'Chris Bridgeman' and 'well-structured and paced innings' have not always had a natural affinity, but they did on this occasion. It was his 43 solid runs which made all the difference. By the time he had finished, the Journeymen's fielding had crumpled, to the point at which they were dropping everything. Reach, for once, did the opposite and clung onto virtually every chance – even in that usual arc of misery, the slips.

With a field so-well placed that our ageing stalwarts had hardly to move a muscle to gather in the ball, while keeper Mark Estall took a great diving catch. Tim Davies and Hugo Bennett, each with three wickets, put paid to the ambitions of the Journeymen who, thanks to Reach's master craftsmanship, were made to live up to their name.

**Ross Clark**



---

## 24Acres Orchard

---

Whilst it will be another month or two before most of the apples and pears in the 24Acres Orchard are ready for picking, a couple of varieties are now coming ripe. As every year, the earliest variety to crop is Discovery (locations H3 and H8).



In future years we will try to make a plan to pick some fruit and bring it to the village so that those unable to visit the orchard have a chance to sample it. But in this 'year of the virus' we're inviting anyone who walks that way to pick a few for their own use and maybe some for their neighbour.

The yield on most trees is still quite low and unfortunately the exposed site means that we are losing a lot of fruit to Westerly winds. Hopefully as the orchard matures, branches become less pliable and the trees shelter one another, more will remain on the trees.

Please don't pick apples unless they are clearly ripe and ready. They should come off the tree easily, with a very gentle upward twist.

And remember, these aren't supermarket apples – they are organically grown, mostly traditional varieties. They will be misshapen, almost all will have blemishes and in some fruits wildlife may have taken up home inside! None of that makes them any less tasty – maybe take them home and quarter with a knife before consuming?

Enjoy!

**David Thomas**

Ps. The grass in the orchard 'meadow' is currently very long, we left it that way to encourage wildlife, but we have asked it to be cut so it should be more accessible soon.

---

## Parish Council Meeting Minutes

---

### Minutes of Reach Parish Council meeting held via Zoom on; Wednesday 3<sup>rd</sup> June 2020

#### Attendance

Alex de Giorgio-Miller	Chair	Present
Charlotte Cane	Vice Chair	Present
Andrew Trump	Councillor	Present
David McMillan	Councillor	Present
Cris Fletcher	Councillor	Present
Nick Acklam	Councillor	Present
Susan Bailey	Clerk	Present
Charlotte Cane	District Councillor	Present
Joshua Schumann	County Councillor	Not Present

**Apologies for absence** – none were received.

#### Forum for members of the public.

None attended.

#### 1. Declaration of Interests

Councillor Cane declared an interest in the planning application **20/00557/ESF** as she is a director of Reach Community Solar Farm.

#### 2. Planning Applications – 20/00557/ESF - Development of a Solar Farm and Ancillary Development Location: Site North of Hightown Drove Burwell.

Following discussion, the PC concluded it is not necessarily opposed to the application but is unable to form a definitive view to a lack sufficient detail.

The scale and location of the development, in a flat, open landscape of recreational and conservation importance, has the potential for significant adverse visual intrusion. The PC do not think that the proposal's visual impact has been adequately assessed and therefore are not yet assured that the proposed mitigations are adequate.

The PC are concerned that the glint and glare analysis does not consider the impact on residents of Reach or recreational users in the area. And feel that the LVIA is light in its analysis of impact on views from the banks of Reach (and Burwell) Lode and from the Devil's Dyke which sit 3 metres or more above the site of the proposed development. The PC appreciates that each application must be judged on its own merits but is concerned that large developments of this type in this area should be looked at together and a strategic plan created to assess and manage the accumulative impact of several such developments. **Clerk** to write to ECDC.

#### Application to divert Burwell Public Footpath No. 3 (part) & Lode Public Footpath No. 7 (part), No. 9 (part) –

Following discussion the PC had no comment to make.

#### 3. County Councillor Report

No report received.

#### 4. District Councillor Report

The Annual Council meeting was held by Zoom and a recording can be seen at - [www.eastcambs.gov.uk/meetings/council-21052020](http://www.eastcambs.gov.uk/meetings/council-21052020).

We are now returning to the published meeting schedule – Planning every 1st Wednesday of the month, Operational Services Committee 8 June, Finance & Assets 18 June and Licensing 24 June. Zoom is generally working well for the meetings but has required some changes to procedures and further changes may be needed to facilitate good decision making.

Cllr Lis Every was re-elected as Chair of Council, with Cllr Alan Sharp elected as Vice Chair. Cllr Anna Bailey remains as Leader of the Council, with Cllr Josh Schumann as her deputy. Cllr Lorna Dupre is Leader of the Lib Dem Group, with Charlotte as her Deputy. John is on Planning and on Finance & Assets and Charlotte is on Finance & Assets and the Bus Services Review Working Party.

Annual Council agreed to set up a Working Party to help East Cambs recover from COVID-19. Its aim is to work with business, Parish Councils and community groups as well as the County Council etc to ensure our local economy recovers and that we enhance the good things which have come from this crisis – notably the community help groups and the increase in cycling and walking as opposed to car journeys which have led to cleaner air.

Charlotte proposed the motion to set up this working group and summarised its purpose as to help drive an environmentally, socially, and economically sustainable recovery for East Cambs.

We are holding our surgeries and 'Meet your Councillors' by Zoom. The next one is Tuesday 23 June – please contact [john.trapp@eastcambs.gov.uk](mailto:john.trapp@eastcambs.gov.uk) for the link if you want to join. The surgery will start at 6.30pm, with 'Meet your Councillors' from 7.00pm.

Because we can't get out and about, Charlotte has set up a Facebook Page where she posts latest information. The address is - [fb.me/charlottecanelibdem](https://fb.me/charlottecanelibdem)

## **5. Minutes of previous Meeting**

Approved as correct.

## **6.1 Reach Grant Fund**

Nothing to report.

## **6.2 Finance**

The Y/E 2019 accounts are now with the accountants. The process has been delayed this year due to the Covid-19 situation.

## **6.3 Parish Council Members**

An enquiry had been received for the Cemetery tap padlock code. The padlock was fitted as a deterrent for travellers although the tap does not work. **Clerk** to find out how much it would cost to reconnect the water supply and what the ongoing costs would be.

Nick Acklam & Steve Boreham are halfway through the village tree survey. With some trees it is unclear as to who owns them as the land ownership is unknown.

## **6.4 Play Spaces**

The playground is presently closed.

## **6.5 Rights of Way**

The small pedestrian bridge over the lode from The Hythe, is rotten, this has been reported to CCC. It should not ideally be used by horses. The PC will monitor the situation.

## **6.6 24Acres Committee**

Nothing to report.

## **6.7 Neighbourhood Plan**

### Evidence Building

The design code for Reach commissioned by the Project Group has been completed by AECOM and approved by central Government. It will shortly appear on the Reach NP webpage. In final form the code included all of the Group's amendments. The code provides guidance to ensure that new development and refurbishment of existing buildings in Reach reflect local identity, reinforce the sense of pride we have in our village and work well for villagers' needs now and into the future.

Alison Farmer, the landscape architect appointed by the group to undertake a landscape appraisal of our neighbourhood, is finalising her report. Her appraisal identifies what gives Reach its unique sense of place. It will help us ensure that our neighbourhood's special qualities and distinctive characteristics are protected and enhanced in the Plan. We will share the appraisal with the village via the webpage as soon as it is available.

The Group has produced a detailed summary of the residents' survey that the majority of villagers completed in January and February 2020. This, too, will shortly be available on the Neighbourhood Plan web page. The summary gives villagers as much detail as possible. However, there are a few areas where we have removed comments because they were too personal or might have identified the respondent. All such comments have been taken into account though.

### The Group draws the following messages from the survey returns:

We, very probably, have a representative view of how the village wants to develop. Evidence: a 53% return of surveys, responses that are broadly consistent with the age and employment profiles of the village.

The village supports our work for now. Evidence: 96% of respondents agreed with the Vision statement.

Reach is a community that cares about its future development. Evidence: the preceding points, 97% of respondents think Reach is a good place to live. 86% have no plans to leave, a significant proportion of responders had invested considerable time and thought on their survey, evidenced by the frequency and length of free text responses. Very few respondents expressly disliked the village.

#### Villagers wanted Reach:

- to remain largely unchanged. Evidence: 49% of respondents said so without prompting, strong affinity in free text comment to older buildings in the village and against modern developments and an associated interest in maintaining traditional building styles (89%), densities (80%) and, to a lesser degree, local building materials.
- to grow very modestly. Evidence: 66% of respondents wanted one to ten houses built in Reach to 2036. Taking account of those who wanted no houses built, three quarters of respondents were opposed to the building of more than ten houses during this period. 60% wanted housing growth to be achieved through individual developments only. 79% were concerned about future development that was unsustainable and would damage the things that make Reach a good place to live.  
...but not necessarily within the existing development envelope. Evidence: 52% of respondents wanted to see housing growth within a carefully expanded development envelope.  
...and to contain a mix of housing types. Evidence: all types gained some approval. There was a strong preference for private market housing (77%), with emphasis on houses for first time buyers (74%) and houses for those wishing to downsize (69%). However, there was some reservation about sheltered housing or housing for the elderly in Reach, given amenities and transport. There was also some questioning of the feasibility of delivering affordable market housing or prescribing housing for local people or first-time buyers.
- to retain its connections with the surrounding countryside and to increase greener and safer transport options. Evidence: 93% of respondents thought ready access to open countryside was very important, 80% supported the creation of vehicle-free routes to neighbouring villages.
- to remain a discrete settlement. Evidence: 88% of respondents thought it very important to keep a zone of separation between Reach and Burwell, 81% thought it very important to keep a zone of separation between Reach and Swaffham Prior.
- to continue to benefit from open views into and out of the settlement. Evidence: 77% of respondents thought such views were important, a significant proportion expressing the view that all views should be preserved and the landscape around the village should be viewed as a whole.
- to retain and perhaps enhance its amenities, especially the pub. Evidence: frequency of free text comments about the pub's importance, 79% of respondents were concerned about insufficient amenities. 43% would like the addition of a shop and/or cafe. The survey did, however, demonstrate how very lightly many of amenities were used and drew out a significant minority concern (21%) about Reach's ability to sustain or enhance its amenities.
- to preserve and enhance its natural, archaeological and historic assets. Evidence: 99% of respondents thought our woodlands were an important asset, 98% thought the village green at the heart of the village very important and wanted it to be given Local Green Status, 90% thought the Devil's Dyke-Fair Green-Hythe-Lode core very important, 90% wanted the above ground sewage plant at the Hythe removed. Over 80% thought it very important to minimise development that would damage our natural, archaeological and historic assets. There was also a sense, in comments throughout the returns, of a community that valued being at the core of an archaeologically and environmentally important landscape.
- to control road vehicles. Evidence: 80% support for traffic free routes, 76% of respondents wanted to discourage HGVs transiting the village, strong concerns about speeding on roads approaching the village, 74% wanted off road parking to fully meet the needs of any new development.
- to become greener. Evidence: 86% of respondents stated they would support a community energy scheme (75% still use oil for home heating), 84% wanted new housing built to the highest environmental standards. Becoming a greener, more sustainable settlement was the second most frequent aspiration for the future of Reach. 8% of respondents expressly said they wanted Reach to become a green or low carbon settlement without prompting. The same aspiration also featured in 'What is missing' comments. Whilst 50% of respondents never use the bus services to
- the village, there were indications that a cheaper, faster and more frequent services especially to the Cambridge railway station, Ad-Addenbrookes and the Science Park might lead to a reduction in car use.
- to remain vibrant, thriving and diverse. Evidence: frequent free text comments on future hopes and amenity provision.

#### Villagers were moderately interested in:

enhancing Reach's tourist potential. Evidence: 58% wanted to promote Reach's attractions

#### Villagers were equivocal about:

enhancing employment provision in the village. Evidence: 48% wanted the NP to make provision for employment in Reach. 51% did not want the NP to make such provision.

#### Communication with the village

Our inability to present our findings and consult face-to-face because of coronavirus restrictions has slowed the progress. Nonetheless we hope to present a draft plan to the village for comment, amendment and addition later in the year.

Hopefully we can do this at an open day in the Village Hall.

In the interim we have prepared a report covering the above ground for the next (web) addition of 'Within Reach'. When the magazine and the detailed evidence packs have been posted online, we should be grateful if the villagers' attention could be drawn to all via the village Facebook.

#### Anglian Water and the Hythe

We have begun to research to establish:

- who owned the Hythe before a large part of it was compulsorily purchased in 1964 by the forerunners of Anglian Water to build the sewage works and
- whether any conditions were placed on this acquisition.

## Summary and Outlook

The coronavirus lockdown continues to delay delivery of the Neighbourhood Plan. We cannot yet be any more precise about the length of the delay. Our next step will be to reconvene the Group (probably via video conference) to take stock, agree what we still need to do to deliver the plan and allocate the work. We will then submit a bid to Locality for funding and technical support. We understand that funding is available despite the pressures on the Treasury.

## **7. Friends of Reach Wood**

The FoRW held a meeting in March, minutes below.

### The journey so far... How did we get to where we are now?

Steve Boreham gave a brief re-cap of events over the past few years leading to the resurrection of the Friends of Reach Wood.

### Matters to discuss

#### The relationship of FoRW with the Woodland Trust – affiliated or not?

After a brief discussion the group unanimously agreed not to seek affiliation to the Woodland Trust.

#### The relationship of FoRW with the Parish Council – sub-committee or not?

After a brief discussion the group unanimously agreed to ask the Parish Council to be recognised as a sub-committee.

#### Recent issues with Woodland Trust Contractors

After a discussion the group unanimously agreed to ask the Woodland Trust to revert to the previous system for 2021 whereby funds were transferred to the Parish Council and used to pay a local contractor to mow the rides and meadow. In addition, the group wanted to ensure that the Woodland Trust's contractor would use a bar-cutter, not a flail-cutter for the meadow in late summer this year.

#### The Reach Wood Management Plan

After a discussion the group unanimously agreed to support the broadly noninterventionist approach outlined in the 2012-2017 Management Plan. There were a number of minor edits needed to bring the plan up to date. There was support for creating habitat piles with brushwood, and for the planned coppicing of hazel beneath the powerlines at the edge of the wood.

#### Meadow and woodland management challenges

The group discussed ash die-back, invasive ragwort and brushwood clearance. It was agreed that the woodland glades created by the die-back of ash trees had created more biodiversity, and that the dead trees required little or no management. After discussion it was agreed to monitor the growth of ragwort on the meadow this year to establish whether the past attempts at control had been successful. If necessary, a cohesive plan for ragwort pulling would be developed for 2021. There was some concern about the establishment of low-level brushwood (surviving beneath the reach of the bar-cutter) on the meadow, but it was suggested that this could be kept in check by manual cutting. There was also a brief discussion about the protection of orchids, and it was agreed that the Friends group would try a co-ordinated approach in 2020.

#### Commemoration of 25 years anniversary.

The group noted the 25th anniversary of the planting of Reach Wood in November 2019. After a brief discussion it was agreed that there could be a community picnic on the meadow to celebrate the anniversary in late August or early September. Although this could be an informal event, it was agreed to approach the Parish Council Event Sub-committee to see if they would like to be involved.

#### Reach Wood BioBlitz

David Thomas described a BioBlitz that he was organising for the National Trust on Reach 24 Acres in July this year. Steve Boreham explained that he was the BioBlitz co-ordinator for Hobson's Conduit Trust and had run BioBlitzes in Cambridge over the last four years. After a brief discussion it was agreed to try to arrange a BioBlitz for Reach Wood for summer 2021.

#### Transfer of Reach Wood to the National Trust

After a brief discussion it appeared that although there were arguments both for and against such a move, there was no strong feeling to pursue this possibility at the moment. Given that the village bought and gifted much of the land to the Woodland Trust originally, it was felt that this was however a pertinent discussion.

#### Date of next meeting

The group agreed that there should be another Friends of Reach Wood meeting in July or August to take stock of progress made to that point.

The FoRW provided the PC with a terms of reference document. The Pc approved this document and were happy to welcome back. Councillor Acklam will be the PC representative on the committee. The PC would like to thank Steve Boreham for being willing to get this group back together.

A complaint had been received regarding cycling in Reach Wood. The PC agreed to explore with FORW the installation of signs that made it clear that access to Reach Wood was for pedestrians only. The PC was prepared to pay the reasonable cost of this.

## **8. PC planning procedures**

Councillor de Giorgio-Miller had produced draft documents, one detailing the process the PC would work through regarding an application and a proforma to be completed for each application to ensure the same questions/issues are considered. Following discussion, **Councillor de Giorgio-Miller** to update the documents for approval at the next meeting.

### 9. The Hythe.

The willow tree on The Hythe is in need of work. There is uncertainty as to who is responsible for tree maintenance on The Hythe. **Councillor Acklam** to write to Anglia Water to establish responsibility. Councillor Acklam continues to work on establishing a relationship and agreement with AW to improve The Hythe area.

It was noted that mowing had been down to the water's edge to allow mooring as agreed with GOBA.

### 11. Information Items

### 12. Payments

E. on	Power on the green	£9.02
GeoXphere	Parish On line	£36.00
Cr Contracting	Mowing	£318.50
N Acklam	Tree tags	58.50

---

## Parish Council Meeting Minutes

---

### Minutes of Reach Parish Council meeting held via Zoom on; Wednesday 1st July 2020

#### Attendance

Alex de Giorgio-Miller	Chair	Present
Charlotte Cane	Vice Chair	Present
Andrew Trump	Councillor	Present
David McMillan	Councillor	Present
Cris Fletcher	Councillor	Present
Nick Acklam	Councillor	Present
Susan Bailey	Clerk	Present
Charlotte Cane	District Councillor	Present
Joshua Schumann	County Councillor	Not Present

**Apologies for absence** – none were received.

#### Forum for members of the public.

None attended.

#### 1. Declaration of Interests

There were none.

#### 2. Planning Applications – 20/00557/ESF - Development of a Solar Farm and Ancillary Development Location: Site North of Hightown Drive Burwell.

Following discussion, the PC concluded it is still not necessarily opposed to the application but is unable to form a definitive view to a lack sufficient detail. The PC opinion has not changed with this amendment, and still believes that the proposed development would be a significant presence in the landscape and that the proposal's visual impact has not been adequately assessed and are therefore not assured that the proposed mitigations are adequate.

Specifically, The Parish Council can see no indication that the LVIA has taken account of the fact that viewpoint 6 stands some metres above the surrounding landscape. There is no assessment of visual impact from Reach Lode bank to the south west of point 6 and from the Devil's Dyke south west of point 3. The PC suspect that the Zone of Theoretical Visibility (ZTV) map would be markedly changed by assessments from these areas as both stand some height above the area of the proposed development. In these circumstances the PC are not confident that reed bed screening alone is sufficient mitigation. This is important as both areas are of recreational, archaeological, and environmental significance. The Parish Council remain concerned that the glint and glare analysis does not consider the impact on residents of Reach or recreational users in the area.

The Parish Council appreciates that each application must be judged on its own merits but is concerned that developments of this type in this area should be looked at together and a strategic plan created to assess and manage the cumulative impact of several such developments. **Clerk** to write to ECDC.

#### 3. County Councillor Report

No report received.

#### **4. District Councillor Report**

Operational Services Committee met on 8 June. They approved the Environment & Climate Change Strategy & Action Plan and required detailed targets to be set by June 2021, with Finance & Assets being asked to consider the actions outlined in the Plan, in terms of how they may be suitably resourced. They also approved the Homelessness & Rough Sleeper Strategy 2020-2025. Their next meeting is on 13 July.

Finance & Assets met on 18 June. They noted the report from the external auditors on the Accounts to the year ended 31 March 2019 – ie over a year after the year being audited – and approved the external audit plan for the year ended 31 March 2020. We expressed concern that this will not report until November – to be useful audit reports need to be timely as well as thorough. They also approved the internal audit plan, although we expressed concern that it didn't cover anything arising from Covid-19 or Brexit – both risks which had been highlighted by the external auditors. They approved £150,000 from CIL funding for road improvements and we stressed that more thought needed to be given to safe routes for cyclists, pedestrians, and horse riders. They established To establish a COVID-19 Member Working Party to work with businesses, community groups and other authorities from parishes through to central government to help drive an environmentally, socially and economically sustainable recovery for East Cambs. Charlotte is a member of this working group, which will hold its first meeting on 9 July. The next meeting is on 23 July and will include items carried over from March, such as the approval of the Supplementary Planning Documents on Environment and Self Build, and June as well as the 2019/20 accounts.

Council will meet again on 16 July. A major item will be a finance update from ECTC which has already warned that it may not be able to repay its £1m loan to ECDC when it falls due.

We are holding our surgeries and 'Meet your Councillors' by Zoom. The next one is Tuesday 21 July – please contact john.trapp@eastcambs.gov.uk for the link if you want to join. The surgery will start at 6.00pm, with 'Meet your Councillors' from 7.00pm.

Because we can't get out and about, Charlotte has set up a Facebook Page where she posts latest information. The address is - fb.me/charlottecanelibdem

#### **5. Minutes of previous Meeting**

Approved as correct.

#### **6.1 Reach Grant Fund**

Nothing to report.

#### **6.2 Finance**

The Y/E 2019 accounts have now been completed.

#### **6.3 Parish Council Members**

An anonymous complaint had been received by each Councillor. The complaint was regarding the state of repair of the Byway which runs behind the village along side Reach Wood. This has been discussed many times by the PC before. The byway can legally be driven on and is the responsibility of CCC. The PC felt the users of the track were trying to maintain the Byway and although the materials used were not necessarily ideal, they were working in good faith and not intentionally fly tipping.

It was concluded that the hedge had been cut to open access to the area of disused clunch pit beside the byway. It was noted that hedgerows should not cut from March – August. Hedgerows surrounding the Byway are again CCC responsibility.

The discussion moved on to how to deal with anonymous correspondence. The PC are uncomfortable with dealing with anonymous correspondence, although the PC recognises that there may be instances when a correspondent does not wish to have their identity disclosed publicly. This will be added to the next meeting agenda.

#### **6.4 Play Spaces**

The playground can be reopened on Saturday 4<sup>th</sup> July under strict Government guidelines. Following discussion signs will be produced for the entrances to the playground and the Gym and the swings on the green. A notice will be sent out by email and on Facebook.

A resident had suggested that padlocks and a more permanent sign could be purchased by the PC should it need to be closed again in future. The PC discussed this and, following the government guidance, felt this was unnecessary at this time.

#### **6.5 Rights of Way**

Nothing to report.

#### **6.6 24Acres Committee**

A quote for £65 had been obtained for the cutting of the meadow area, should it be necessary. Approved.



## 6.7 Neighbourhood Plan

### Evidence Building

The landscape appraisal of our neighbourhood has been finalised and published on the NP webpage [http://www.reach-village.co.uk/Neighbourhood%20Plan/Reach%20NP%20FINAL%20LANDSCAPE%20APPRAISAL12%20June\\_compressed.pdf](http://www.reach-village.co.uk/Neighbourhood%20Plan/Reach%20NP%20FINAL%20LANDSCAPE%20APPRAISAL12%20June_compressed.pdf). We have drawn villagers' attention to it via the village Facebook page. The appraisal identifies what gives Reach its unique sense of place. It will help us ensure that our neighbourhood's special qualities and distinctive characteristics are protected and enhanced in the Plan.

### Resumption of meetings

On 17 June, the NP Group met (online) for the first time since the coronavirus lock down. Led by our town planning consultant, Ian Poole, we reviewed progress. Ian assessed that we were at the mid-way point in the NP process. We were close to completing initial evidence gathering and beginning to look at policy options. Ian laid out a draft structure for the Plan based on work to date which the Group approved in slightly modified form. Ian observed that, provided there were no major issues that we had failed to identify, it was realistic to see a referendum on the finalised Plan in June or July 2021.

The remainder of the meeting was spent in initial discussion of those areas of the Plan where there were gaps in our evidence gathering and collation and/or where the Group had yet to identify an option or options for the Plan - namely housing allocation and revisions to the development envelope, designation of local green spaces, employment opportunities, including tourism in the village, integrating protection of the natural environment into the plan, enhancing protection of historic assets in the village. There was some discussion of solar farms given the growing number of applications locally and of the impact on coronavirus on villagers' desire to work from home or in the village. We plan to meet again in mid-July.

### Summary and Outlook

Group members are currently considered the resources (in village and external) required to take the Plan to completion. Once collated submit a bid to Locality for funding and technical support. We understand that funding is available despite current pressures on the Treasury.

## 6.8. Friends of Reach Wood

The last PC meeting discussion was well received by the FORW. The pedestrian only sign is still to be produced.

## 7. Approve Annual Governance Statement

Approved and signed.

## 8. Approve the Accountancy statement

Approved and signed.

## 9. PC planning procedures – Approval

Following the previous discussion two documents had been produced, Planning Discussion Pro forma and a Planning Procedure document. These were both approved.

## 10. The Hythe – Update

Anglia Water had been met at The Hythe. AW had accepted responsibility for the willow tree and will get back to the PC regarding any work to be done.

It is hoped that once the archives at ECDC reopen there may be some papers relating to the compulsory purchase of the land. **Clerk** to search the minutes for 1964 to look for any information.

## 11. Website complying with the 'Public Sector Bodies Accessibility Regulations 2018'

The PC only need to do a basic audit. David Parr has agreed to do this. He will also produce a document to enable the hand over of the management of the PC web pages should this ever be necessary.

## 12. August Meeting

An August meeting will only be held should it be necessary, for planning etc. and then only that item will be discussed.

## 13. Information Items

There were none.

## 14. Payments

E. on	Power on the green	£9.02
Cr Contracting	Mowing	£318.50
S Bailey	Clerk Salary	£1002.30

---

## Diary Dates

---

August	Event	Location	Time
Wednesday 5	Parish Council Meeting	Virtual Meeting	7.45pm
Thursday 6	Recycling Day (Green)		
Thursday 13	Recycling Day (Blue)		
Thursday 20	Recycling Day (Green)		
Thursday 27	Recycling Day (Blue)		

September	Event	Location	Time
Wednesday 2	Parish Council Meeting	Virtual Meeting	7.45pm
Thursday 3	Recycling Day (Green)		
Thursday 10	Recycling Day (Blue)		
Thursday 17	Recycling Day (Green)		
Thursday 24	Recycling Day (Blue)		

---

## Church Services in Burwell and in Reach

---

As of 17<sup>th</sup> March 2020, all Church of England services have been suspended until further notice.

Should that restriction be lifted in the next few weeks, we will put updates on the Church noticeboard, on our website and on Facebook.

If you are a person who prays, this is a prayer you might use, written by Miranda Threlfall-Holmes, Vicar of St Bride's, Liverpool.

## Bus Timetable

Reach is served by the Stagecoach number 11 bus service - summary of all buses serving Reach is shown below.

**Please note that there is no bus service at all on Sundays**

Cambridge to Bury - Monday to Friday (excluding Bank Holidays)				
Cambridge Drummer Street	Reach	Burwell Ness Road	Newmarket Bus Station	Bury Bus Station
06:50	07:28	07:36	08:08*	08:49
07:50	08:28	08:36	09:08*	09:49
09:50	10:28	10:36	11:08*	11:49
11:50	12:28	12:36	13:08*	13:49
13:50	14:28	14:36	15:24*	15:49
15:50	16:28	16:36	17:30	17:55
18:15	18:53	19:06		
19:15	19:53	20:06		

Cambridge to Bury - Saturdays (excluding Bank Holidays)				
Cambridge Drummer Street	Reach	Burwell Ness Road	Newmarket Bus Station	Bury Bus Station
06:50	07:28	07:36	08:08*	08:49
07:50	08:28	08:36	09:08*	09:49
09:50	10:28	10:36	11:08*	11:49
11:50	12:28	12:36	13:08*	13:49
13:50	14:28	14:36	15:08*	15:49
15:50	16:28	16:36	17:08	17:55
18:15	18:53	19:01		
19:15	19:53	20:03		

Bury to Cambridge - Monday to Friday (excluding Bank Holidays)				
Bury Bus Station	Newmarket Bus Station	Burwell Ness Road	Reach	Cambridge Drummer Street
		06:19	06:33	07:12
		06:39	06:53	07:32
	08:40	09:06	09:20	09:59
10:05	10:35*	11:06	11:20	11:59
12:05	12:35*	13:06	13:20	13:59
14:05	14:35*	15:06	15:20	14:59
15:05	15:35*	16:06	16:20	15:59
16:05	16:35*	17:06	17:20	16:59
17:05	17:35*	18:06	18:20	17:59

Bury to Cambridge - Saturdays (excluding Bank Holidays)				
Bury Bus Station	Newmarket Bus Station	Burwell Ness Road	Reach	Cambridge Drummer Street
		06:19	06:33	07:12
		06:49	07:03	07:42
	08:40	09:06	09:20	09:59
10:05	10:40*	11:06	11:20	11:59
12:05	12:40*	13:06	13:20	13:59
14:05	14:40*	15:06	15:20	15:59
15:05	15:40*	16:06	16:20	16:59
16:05	16:40*	17:06	17:20	17:59
17:05	17:40*	18:06	18:20	18:59

\* These are departure times - buses will arrive approximately 5 minutes earlier

A full timetable can be downloaded from [www.reach-village.co.uk/bus\\_service.html](http://www.reach-village.co.uk/bus_service.html)

---

## Then and Now *(see opposite page for pictures)*

---

Two views of Little Lane taken from the ‘Tigh An Righ’ corner or ‘Triple One’ as I knew it looking towards ‘Ivy End Cottage’ on the other corner. The clunch barns being demolished (about 1962) extended along most of the Lane and being quite high must have created a very dark walk through for villagers. Today it’s simply overgrown.

**Chris Patterson**

---

## Contact Information

---

<b>Parish Council – see “Know Your Parish Council”</b>		
<b>Village Centre</b>		
Chair	Grahame Radford	01638 742814
Finance	Andrew Trump	01638 743335
Bookings	Grahame Radford	01638 742814
<b>Marquee Bookings</b>	Andrew Hall	01638 743737
<b>Church</b>		
Vicar	Eleanor Williams	01638 741262
Curate (duty days Wed, Fri and Sun)	Reverend Paula Spalding	07545 868549
Priest in Retirement	Reverend David King	01638 742924
Parochial Church Council Member	Pam King	01638 742924
Churchwarden	Dr Stephen Martin	01638 611235
Churchwarden at Burwell/Reach	Sarah Wingate	01638 742498
<b>Emergencies</b>		
Electricity (Eastern Electric)		0800 783 8838
Police (Emergency/Non-Emergency)		999/101
Water (Anglian Water)		08457 145145
<b>Doctors, Burwell</b>		
Appointments and Emergencies		01638 741234
Enquiries		01638 743602
Community Nurses		01638 742382
Surgery Hours	Mon 8.30am to 6.00pm with extended hours on a Monday please phone the surgery for details	